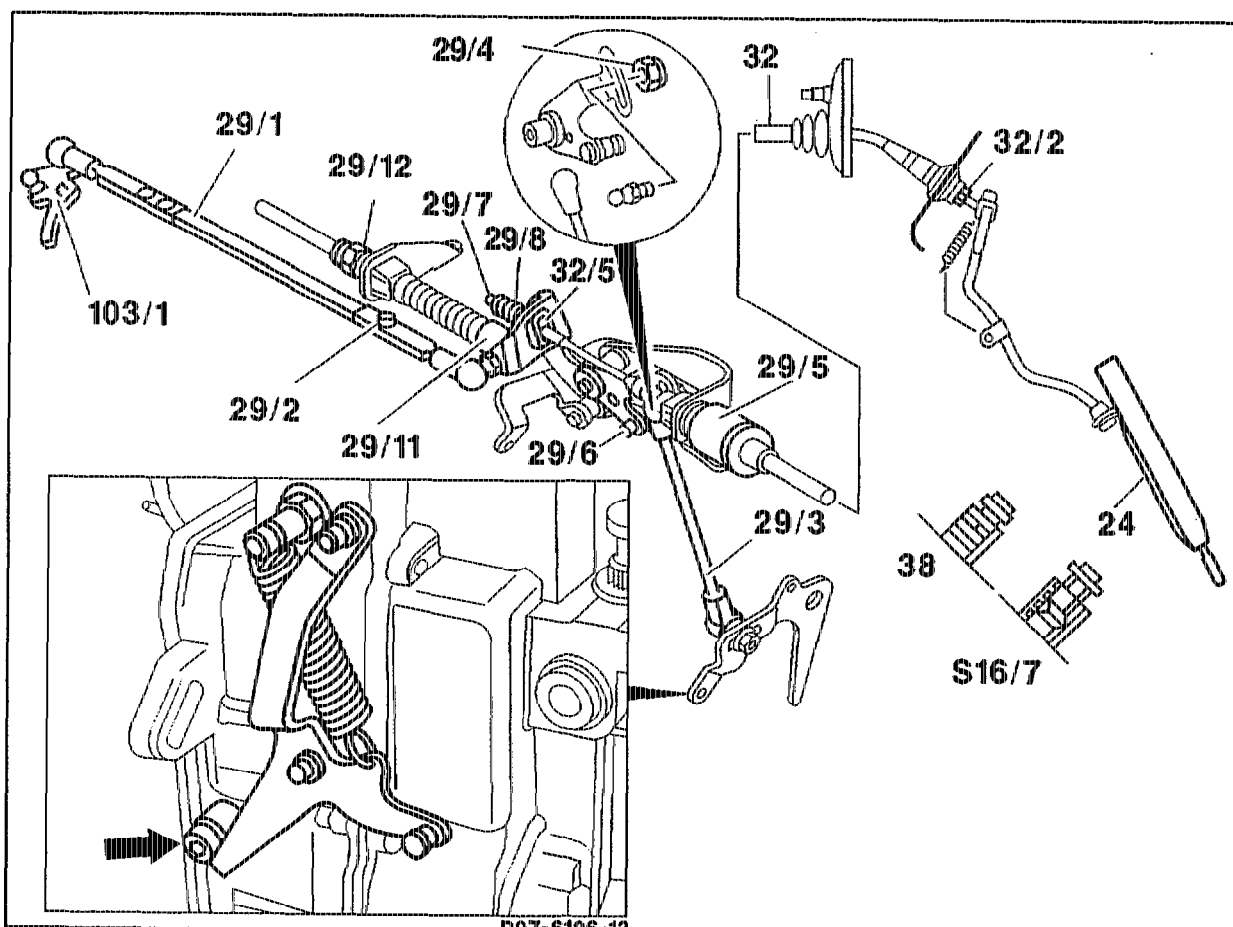


## 30-1010 Adjusting accelerator control

Operation no. of operation texts and work units or standard texts  
and flat rates:  
30-1010



P30-5302-57

Accelerator control lever, linkage and  
Bowden cable (32) .....

check for ease of movement and condition,  
replace parts if necessary.

### Idle speed setting at engine side

Accelerator pedal (24) .....

in idle speed position.

Hexagon bolt (29/2) at connecting rod  
to vacuum control flap .....

slacken.

Nut (29/4) at ball head of  
connecting rod (29/3) .....

slacken.

Adjusting nut (29/5) .....	turn until the roller (29/6) in the fulcrum lever is resting free of tension against end stop.
	<b>Note</b>
	After adjusting, there must not be any play between spring plate (29/7) and spring (29/8).
Nut (29/4) at ball head of connecting rod (29/3) .....	tighten.
	<b>Note</b>
	If automatic transmission fitted, attach ball socket of control pressure cable (29/11) free of tension. To do this, pull control pressure cable forward until a slight resistance is felt and turn bolt (29/12).
Relay lever (103/1) of vacuum control flap .....	turn until it is resting against idle speed stop.
Connecting rod (29/1) .....	pull apart at the riveted side until the idle travel is eliminated.
Hexagon bolt (29/2) of connecting rod to vacuum control flap .....	tighten.
<b>Full throttle, manual transmission</b>	
Full throttle stop (38) .....	release by turning to the left.
Accelerator pedal (24) .....	push through with engine switched off until adjusting lever just reaches full throttle stop (arrow) on injection pump; pull out stop pin slightly.
	Lock full throttle stop (38) in the adopted position by turning to the right.
<b>Full throttle, automatic transmission</b>	
Accelerator pedal (24) .....	push as far as the stop with engine switched off (do not operate kickdown switch (S16/7)), turn adjusting nut (29/5), if necessary until adjusting lever just reaches full throttle stop (arrow) on injection pump.

### Idle speed position, chassis side

Accelerator pedal (24) in idle speed position . . . .	there must not be any play between driver spring (29/8) and guide piece (32/5); alter with adjusting nut (32/2), if necessary, inside vehicle.
Bowden cable (32) . . . . .	grease between end piece and guide piece (32/5) with anticorrosion grease 000 989 87 51 10.

### Length of connecting rod 1)

Connecting rod to vacuum control flap (29/1)	284 mm	variable
Connecting rod to injection pump (29/3)	218 mm	fixed size

1) measured from center-to-center of ball sockets

### Notes

Restoring spring modified. Strengthened restoring spring to ensure accelerator control damper moves back when engine idling.

### Production breakpoint: as of June 1993

Model	Engine	Engine end no. automatic transmission
124.104/107/126/129/ 186	605.911	000451
124.131/191	606.910	000179

Restoring spring at injection pump with increased spring force.

### Production breakpoint: as of September 1993

Model	Engine	Engine end no. manual transmission
124.104/107/126/129/ 186	605.911	005093
124.131/191	606.910	001671