

ENGINE 601, 602, 603 (except, 602.982)**A Tensioning device 1st version**

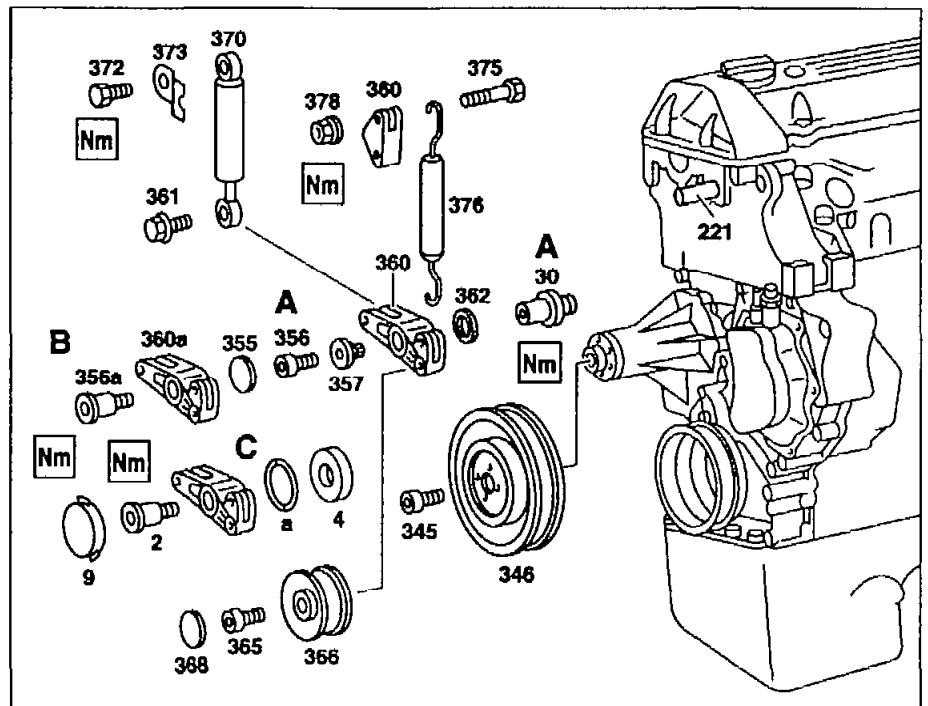
- 355 End cover
- 356 Bolt
- 357 Lock washer
- 360 Tensioning lever
- 362 Spacer
- 30 Bearing pin

B Tensioning device 2nd version




- 356a Fit bolt
- 360a Tensioning lever

C Tensioning device 3rd version






- 2 Fit bolt
- 4 Spacer
- 9 End cover
- a Seal



P13.25-0224-06

	Removing, installing		
1.1	Remove magnetic fan clutch	Engines with magnetic fan clutch	20-335
2.1	Remove viscous fan clutch and fan shroud	Engine 601 in model 202 Engine 601, 602 in model 124, 201 Engine 603 in model 124, 126, 140	AR20.40-P-5660HA AR20.40-P-5660HW
3.1	Remove radiator	Models 126, 201	AR20.20-P-3865HW
4	Remove poly V-belt		AR13.22-P-1202HW AR13.22-P-1202HW
5	Press off end cover (368)		
6	Remove tensioning pulley (366)	Nm	BA13.25-P-1001-01A
7	Unbolt belt pulley (346) of coolant pump	Nm	BA20.10-P-1001-01A
8	Unbolt shock absorber (370)	Nm  Installation: Operate shock absorber by hand before installing and bleed	
9	Unscrew nut (378) and detach tensioning spring (376)	Nm Nm	BA13.25-P-1003-01A BA13.25-P-1004-01A
10.1	Take off end cover (355)	Tensioning device 1st version	
10.2	Unscrew bolt (356) and remove tensioning lever (360)	Nm Tensioning device 1st version Inspect for condition and wear. Pay attention to spacer (362).	BA13.25-P-1006-01A
10.3	Remove bearing pin (30), install	Tensioning device 1st version  Installation: Clean thread and coat with sealant. Nm	BR00.45-Z-1003-01A BA13.25-P-1002-01A



11.1	Unscrew fit bolt (356a), remove tensioning lever (360a)	Tensioning device 2nd version  Installation: Clean thread and coat with sealant. Only the second version is still supplied as replacement part. Complete with bearing and fit pin. 	BR00.45-Z-1003-01A BA13.25-P-1002-01A
12.1	Take off end cover (9)	Tensioning device 3rd version	
12.2	Unscrew fit bolt (2), remove tensioning lever	 Tensioning device 3rd version  Pay attention to seal (a) and spacer (4).  Installation: Clean thread and coat with sealant.	BA13.25-P-1002-01A BR00.45-Z-1003-01A
13	Install in the reverse order		

 Belt tensioning device

Number	Designation		Engine 601, 602 except 602.98, 603 except 603.971	Engine 603.971
BA13.25-P-1001-01A	Bolt for attaching tensioning pulley	Nm	25	30
BA13.25-P-1002-01A	Bearing pin for tensioning lever mounting	Nm	100	100
BA13.25-P-1003-01A	Shock absorber of tensioning device to cylinder head	Nm	25	25
BA13.25-P-1004-01A	Shock absorber of tensioning device to tensioning lever	Nm	20	20
BA13.25-P-1006-01A	Bolt of tensioning lever to bearing pin	Nm	10	-

 Coolant pump, coolant thermostat

Number	Designation		Engine 601, 602 except 602.98, 603
BA20.10-P-1001-01A	Bolt of belt pulley to coolant pump	Nm	15

Repair products

Number	Designation	Order number
BR00.45-Z-1003-01A	Omnifit 100 M orange sealant	002 989 23 71

